



Overall testresults #57

General test results information

This report presents the results of a group test. This test was started on 11-01-2014 and finished on 14-01-2014. You have invited 12 persons to participate. Of the persons receiving the invitation, 75% fully completed the test prior to the deadline. This test was configured as follows:

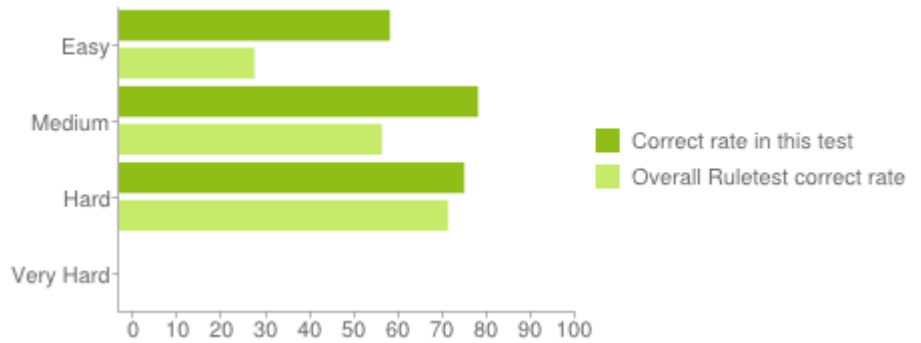
Number of questions: 15

Number of easy questions: 5

Number of medium questions: 5

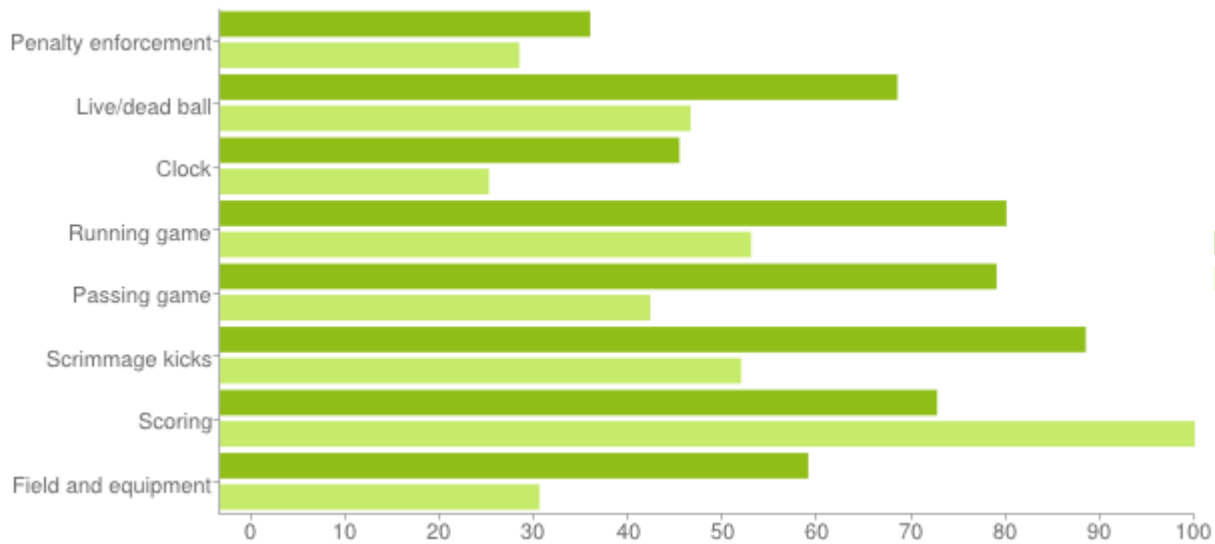
Number of hard questions: 5

Number of very hard questions: 0



Results specified for each topic

This table shows the correctness percentages of this test compared to the Ruletest average scores.



Please note, a single question may be associated with multiple tags.



Overall testresults #57

Detailed results

The left column states the internal Ruletest question ID, combined with the difficulty level assigned by our quality team: (E)asy, (M)edium, (H)ard, (V)ery hard. The second column lists the questions. The third column the possible answers and if these are correct or not (for open questions only the correct values are noted). The fourth column indicates how many participants chose an answer. For open questions only the percentage correct and incorrect answers are noted. The right column provides the explanation for the correct answer(s).

#	Detailed question	Possible answers	Given answers	Explanation
7 E	Which statement(s) about the goal posts is/are true?	<p>A. <input checked="" type="checkbox"/> Each goal shall consist of two white or yellow uprights</p> <p>B. <input checked="" type="checkbox"/> The top of the horizontal crossbar is 14 feet above the ground</p> <p>C. <input checked="" type="checkbox"/> Each goal shall extend at least 24 feet above the ground</p>	<p>A. 100%</p> <p>B. 22%</p> <p>C. 67%</p>	<p>Each goal shall consist of two white or yellow uprights extending at least 30 feet above the ground with a connecting white or yellow horizontal crossbar, the top of which is 10 feet above the ground.</p> <p>www.ruletool.info/1-2-5-a</p>
8 M	Which statement(s) about the goal is/are true?	<p>A. <input checked="" type="checkbox"/> The crossbar and uprights shall be positioned 1 foot outside of the endline</p> <p>B. <input checked="" type="checkbox"/> The goal is out of bounds</p> <p>C. <input checked="" type="checkbox"/> The inside of the uprights and crossbar shall be in the same vertical plane as the inside edge of the end line</p> <p>D. <input checked="" type="checkbox"/> The outside of the uprights and crossbar shall be parallel to the outside edge of the end line</p>	<p>A. 0%</p> <p>B. 100%</p> <p>C. 67%</p> <p>D. 11%</p>	<p>The inside of the uprights and crossbar shall be in the same vertical plane as the inside edge of the end line. Each goal is out of bounds.</p> <p>www.ruletool.info/1-2-5-a</p>
26 E	2nd down and 5 on the A-25. The ball is ready for play, team A has set. QB6 is in shotgun formation 3 yards behind the snapper. Snapper A70 touches the ball, and moves it backwards between his legs. He holds the ball between his legs and does not release the ball. He is immediately tackled by B67 on the A-24.	<p>A. <input checked="" type="checkbox"/> Team B will decline the penalty for this dead ball foul. Third down on the A-24.</p> <p>B. <input checked="" type="checkbox"/> Team B will decline the penalty for this live ball foul. Third down on the A-24.</p> <p>C. <input checked="" type="checkbox"/> Delay of game by A6, 1 down and 10 to go on the A-20</p> <p>D. <input checked="" type="checkbox"/> Illegal snap by A70, 5 yard penalty: 1 down and 10 to go on the A-20</p>	<p>A. 11%</p> <p>B. 11%</p> <p>C. 11%</p> <p>D. 67%</p>	<p>Foul for an illegal snap:</p> <p>www.ruletool.info/2-23-1-a.</p>
44 E	Third down at the A-3. After snapping the ball, snapper A58 touches B72 at the shoulders on his way to block a linebacker. While B72 and A58 are in contact, right guard A65 blocks B72 at his thigh from the front at the A-4 yardline. The result of the play is a 1st down at the A-25.	<p><input checked="" type="checkbox"/> Down 1</p> <p><input checked="" type="checkbox"/> Ball on 25</p> <p><input checked="" type="checkbox"/> Possession A</p>	<p><input checked="" type="checkbox"/> 89%</p> <p><input checked="" type="checkbox"/> 11%</p>	<p>A.R. 9-1-10-V. RULING: Legal. A54 is not blocking B62. The incidental contact does not constitute part of a combination block, and hence there is no chop block.</p>



Overall testresults #57

#	Detailed question	Possible answers	Given answers	Explanation
46 H	Select the words below that are required for a team to have or gain 'legal possession' of the ball.	<p>A. <input checked="" type="checkbox"/> The team gaining possession shall not have committed a foul prior to gaining possession</p> <p>B. <input checked="" type="checkbox"/> Player/team possession of the ball</p> <p>C. <input checked="" type="checkbox"/> Player/team eligibility to catch/recover the ball</p>	<p>A. 11%</p> <p>B. 100%</p> <p>C. 78%</p>	A team is in legal possession if it has team possession when its players are eligible to catch or recover the ball. www.ruletool.info/2-4-1-c . It is not an issue if the team has committed a foul.
48 H	Are any or all of the following statements correct? Statement 1: It is by definition possible to catch a fumble Statement 2: It is by definition possible to catch a pass without any part of the player's body touching the ground inbounds	<p>A. <input checked="" type="checkbox"/> Only statement 1 is true</p> <p>B. <input checked="" type="checkbox"/> Both statements are true</p> <p>C. <input checked="" type="checkbox"/> Both statements are false</p>	<p>A. 33%</p> <p>B. 67%</p> <p>C. 0%</p>	Both are true: Statement 1) www.ruletool.info/2-2-1 : A pass, kick or fumble that has not yet touched the ground is a live ball in flight. www.ruletool.info/2-4-3-a : "To catch a ball means that a player: 1. Gains possession (Rule 2-4-1) of a live ball in flight. Statement 2): To catch a ball means that a player: 2. Leaves his feet and firmly grasps a live ball in flight, the ball first touching the ground inbounds while still in his firm grasp." So if the ball touches the ground and the receiver does not, it is still a catch.
49 M	Which statement(s) is/are correct about pass plays? Statement 1: a receiver can gain firm, inbound possession of the ball and still not complete a catch. Statement 2: the receiver must have both feet inbounds while having possession and firm control of the ball, in order to complete a catch	<p>A. <input checked="" type="checkbox"/> Only statement 1 is correct</p> <p>B. <input checked="" type="checkbox"/> Only statement 2 is correct</p> <p>C. <input checked="" type="checkbox"/> Both statements are correct</p> <p>D. <input checked="" type="checkbox"/> Both statements are false</p>	<p>A. 100%</p> <p>B. 0%</p> <p>C. 0%</p> <p>D. 0%</p>	Only statement 1 is correct. Loss of ball simultaneous to returning to the ground is not a catch, interception or recovery: www.ruletool.info/2-4-3-e . Statement 2 is false: If one foot first lands inbounds and the receiver has possession and firm control of the ball, it is a catch or interception even though a subsequent step or fall takes the receiver out of bounds: www.ruletool.info/2-4-3-a
50 H	QB A4 throws a legal forward pass towards the sideline on his right side. Receiver A89 and corner back B44 are both in position to catch the ball. While the ball is in the air, A89 voluntarily steps out of bounds with one foot and remains out of bounds during the next action. Shortly, both players firmly grab the ball, after which B44 pulls the ball from the hands of A89. He secures the ball and runs to the team A endzone remaining inbounds for an apparent touchdown. Please select the correct statements.	<p>A. <input checked="" type="checkbox"/> A89 has committed a foul for illegal touching</p> <p>B. <input checked="" type="checkbox"/> The pass is incomplete</p> <p>C. <input checked="" type="checkbox"/> The ball is dead upon the simultaneous catch</p> <p>D. <input checked="" type="checkbox"/> The pass is intercepted and declared dead immediately as A89 is out of bounds.</p> <p>E. <input checked="" type="checkbox"/> Team A has possession on the spot of the catch</p> <p>F. <input checked="" type="checkbox"/> The touchdown is good</p>	<p>A. 11%</p> <p>B. 89%</p> <p>C. 0%</p> <p>D. 11%</p> <p>E. 0%</p> <p>F. 0%</p>	To catch a ball means a player gains possession of a LIVE ball in flight: www.ruletool.info/2-4-3-a . The ball is OOB when it touches a player who is OOB: www.ruletool.info/4-2-3-a . The live ball becomes DEAD when it goes OOB: www.ruletool.info/4-1-3-a . The pass is incomplete if the ball is OOB by rule: www.ruletool.info/7-3-7-a . So the very instant that it touches A80 then the ball is OOB, the ball becomes dead, it cannot be caught and so is an incomplete pass.



Overall testresults #57

#	Detailed question	Possible answers	Given answers	Explanation
74 E	2013-2014 rules. With about five minutes remaining in the third quarter, a Team B player's helmet comes off during the play (no foul involved). Team B chooses to use a timeout. Please mark the correct statement related to the play and game clock:	<p>A. <input checked="" type="checkbox"/> Play clock is 40 seconds; the game clock starts on the snap</p> <p>B. <input checked="" type="checkbox"/> Play clock is 25 seconds; the game clock starts on the ready for play</p> <p>C. <input checked="" type="checkbox"/> Play clock is 40 seconds; the game clock starts on the ready for play</p> <p>D. <input checked="" type="checkbox"/> Play clock is 25 seconds; the game clock starts on the snap</p>	<p>A. 0%</p> <p>B. 11%</p> <p>C. 0%</p> <p>D. 89%</p>	Play clock is 25 seconds; the game clock starts on the snap. 2013 CFO/NCAA National Rules Exam. www.ruletool.info/3-3-2-d , www.ruletool.info/3-2-4-c
85 M	The game clock is running. With 20 seconds remaining on the play clock, the officials have not spotted the ball for the next down. Please indicate if the following procedure is correct: The referee shall signal an official's timeout, reset the play clock to 25 seconds and start both the game clock and the play clock on his signal.	<p>A. <input checked="" type="checkbox"/> The procedure is not correct: the play clock should be reset to 40 seconds</p> <p>B. <input checked="" type="checkbox"/> The procedure is correct</p> <p>C. <input checked="" type="checkbox"/> The procedure is not correct: the referee should not have stopped the game clock and/or reset the play clock</p> <p>D. <input checked="" type="checkbox"/> The procedure is not correct: the game clock should start on the snap</p>	<p>A. 0%</p> <p>B. 100%</p> <p>C. 0%</p> <p>D. 0%</p>	The procedure is correct: www.ruletool.info/3-2-4-b . CFO rules test 2013.
86 M	Fourth down and 2 to go at the B-28. On the last play of the first quarter, QB A3 is called for intentional grounding at the B-33. Please indicate if the following statement is correct: Following the penalty enforcement, the period will be extended with an untimed down.	<p>A. <input checked="" type="checkbox"/> Yes, the statement is correct</p> <p>B. <input checked="" type="checkbox"/> No, the quarter is over; Team B will start the next quarter with an untimed down</p> <p>C. <input checked="" type="checkbox"/> No, the quarter is over; Team B will start the next quarter (with a timed down)</p>	<p>A. 33%</p> <p>B. 0%</p> <p>C. 67%</p>	No, the quarter is over; Team B will start the next quarter (with a timed down). www.ruletool.info/3-2-3-a .
87 E	Fourth down and 8 yards to go at the A-28. Team A is in scrimmage kick formation. They fake the punt and run to the right sideline. The ball carrier is hit and driven out of bounds at the A-45. About 10 minutes remain in the quarter. Statement 1: the play clock should be reset to 25 seconds Statement 2: the game clock should start on the snap	<p>A. <input checked="" type="checkbox"/> Only statement 1 is correct.</p> <p>B. <input checked="" type="checkbox"/> Both statements are correct</p> <p>C. <input checked="" type="checkbox"/> Both statements are false</p> <p>D. <input checked="" type="checkbox"/> Only statement 2 is correct.</p>	<p>A. 0%</p> <p>B. 0%</p> <p>C. 100%</p> <p>D. 0%</p>	Both are false. CFO rules test 2013. There is no reason to reset the playclock to 25 seconds: www.ruletool.info/3-2-4-c . There is also no reason to start the gameclock on the snap (team A first down and ball carrier out of bounds outside 2 minutes): www.ruletool.info/3-3-2-e



Overall testresults #57

#	Detailed question	Possible answers	Given answers	Explanation
91 H	Down 1 with goal to go at the B-7 yardline. QB A6 receives the snap and runs toward the right sideline. Near the endzone, A6 jumps feet first toward the pylon on the goalline. He first touches the pylon and then the ground. At that moment, the ball is in his hand at the 1 yardline. A6 slides into the endzone with the ball breaking the plane of the goalline. He is untouched by team B. Time expired in the third quarter on this play. Next play?	<ul style="list-style-type: none">✓ Down 2✓ Ball on 1✓ Possession A	<ul style="list-style-type: none">✓ 78%✗ 22%	Next down for team A at the 1 yardline. The QB is out of bounds when he touches the pylon: www.ruletool.info/4-2-1-b . No touchdown as the ball did not cross the goal line prior to the QB touching the pylon.
93 H	Team A's PAT kick is blocked behind the line of scrimmage by Team B. The kick continues to roll into the end zone where a Team A player recovers the kick prior to it going out of bounds.	<ul style="list-style-type: none">A. ✗ The result of the play is a touchbackB. ✗ 2 points for Team AC. ✓ No points for team A	<ul style="list-style-type: none">A. 11%B. 11%C. 78%	No points for team A: the kick is dead when it touches the ground in the endzone: www.ruletool.info/6-3-9 . No touchback: www.ruletool.info/8-3-6 . Adapted version of CFO rules test 2013
95 M	B3 player intercepts a forward pass at the B-4 yard line and his momentum carries him into the end zone where he is downed. During B's run in the end zone, a teammate clips an opponent in the end zone.	<ul style="list-style-type: none">A. ✓ Safety; 2 points for Team AB. ✗ Enforce the clipping penalty from the B-4. First and 10 team B.	<ul style="list-style-type: none">A. 56%B. 44%	The penalty results in safety: www.ruletool.info/10-2-2-c , www.ruletool.info/8-5-1-b . CFO rules test 2013

Thank you for using ruletest.info.



Overall testresults #57

Appendix: detailed test results

Invitations that were not used (non-participants)

No.	Name	E-mail address
1		umpire@ruletool.info
2		coordinator@ruletool.info
3		rulesguru@ruletool.info

Results per person

The table below shows the results for each person. The results are ordered by correctness percentage (highest first). With equal percentages, the results are ordered on points scored. Please note that a user earns bonus points per difficulty level. Therefore, a participant may score more points than other participants while having a lower correctness percentage.

Score	Name	E-mail	7	8	26	44	46	48	49	50	74	85	86	87	91	93	95
232 points, 93%		sidejudge@ruletool.info	7	8	26	44	46	48	49	50	74	85	86	87	91	93	95
212 points, 87%		backjudge@ruletool.info	7	8	26	44	46	48	49	50	74	85	86	87	91	93	95
212 points, 87%		alternate@ruletool.info	7	8	26	44	46	48	49	50	74	85	86	87	91	93	95
192 points, 80%		carl@ruletool.info	7	8	26	44	46	48	49	50	74	85	86	87	91	93	95
177 points, 73%		fieldjudge@ruletool.info	7	8	26	44	46	48	49	50	74	85	86	87	91	93	95
152 points, 73%		referee@ruletool.info	7	8	26	44	46	48	49	50	74	85	86	87	91	93	95
138 points, 73%		jim@ruletool.info	7	8	26	44	46	48	49	50	74	85	86	87	91	93	95
142 points, 67%		linesman@ruletool.info	7	8	26	44	46	48	49	50	74	85	86	87	91	93	95
52 points, 40%		linejudge@ruletool.info	7	8	26	44	46	48	49	50	74	85	86	87	91	93	95