

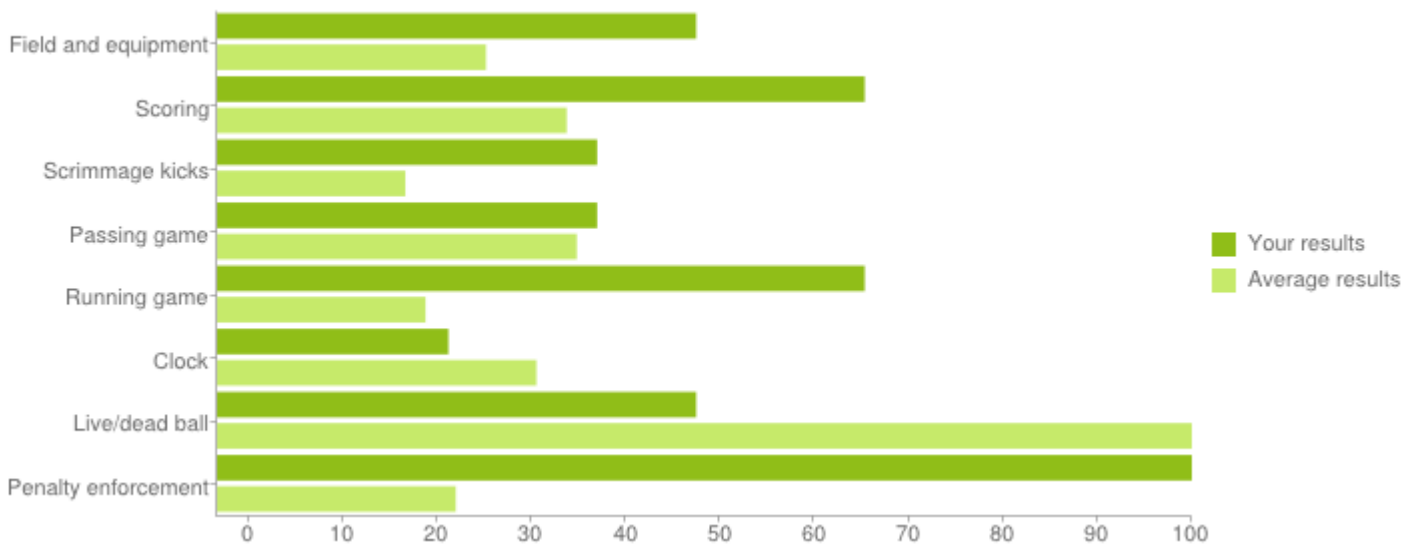


Your test results

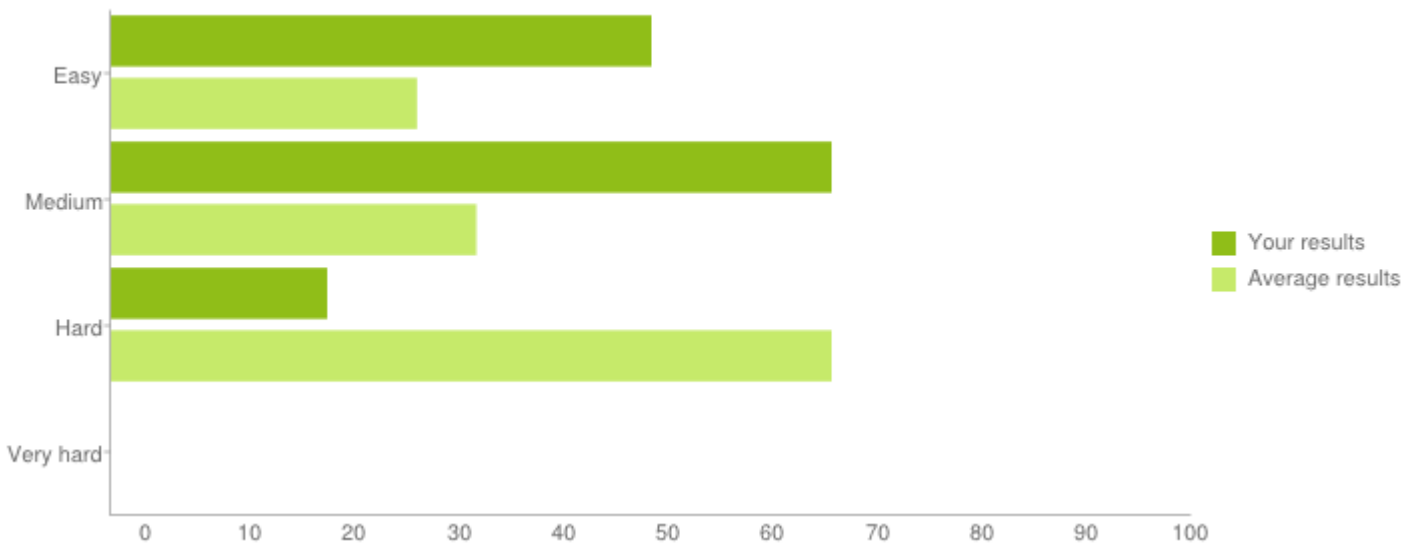
This test was finished on 12 January 2014 22:15

Score	47% (59 points)
Good answers	7 out of 15
Time used	11 minutes

Your results for each tag



Your results for each difficulty level





Detailed results for each question

The following table lists all questions that were part of this test. The first item states to the identifier for each unique question and if you answered it correctly (green background) or not (red background). To the right of the ID, the following information is stated for multiple choice and multi-answer questions:

- The question itself
- All answer possibilities for this question, including if you have selected an answer possibility or have not selected it . A checkmark ✓ indicates your (de)selection is correct, a cross ✗ indicates your (de)selection is incorrect.
- Our explanation of the correct answer possibilities.

For the open questions, the correct answers are provided, followed by your answers.

26	<p>2nd down and 5 on the A-25. The ball is ready for play, team A has set. QB6 is in shotgun formation 3 yards behind the snapper. Snapper A70 touches the ball, and moves it backwards between his legs. He holds the ball between his legs and does not release the ball. He is immediately tackled by B67 on the A-24.</p>	
	<p> <input type="radio"/> ✓ Team B will decline the penalty for this dead ball foul. Third down on the A-24. <input type="radio"/> ✓ Team B will decline the penalty for this live ball foul. Third down on the A-24. <input type="radio"/> ✓ Delay of game by A6, 1 down and 10 to go on the A-20 <input checked="" type="radio"/> ✓ Illegal snap by A70, 5 yard penalty: 1 down and 10 to go on the A-20 </p>	
	<p>Foul for an illegal snap: www.ruletool.info/2-23-1-a.</p>	
87	<p>Fourth down and 8 yards to go at the A-28. Team A is in scrimmage kick formation. They fake the punt and run to the right sideline. The ball carrier is hit and driven out of bounds at the A-45. About 10 minutes remain in the quarter. Statement 1: the play clock should be reset to 25 seconds Statement 2: the game clock should start on the snap</p>	
	<p> <input type="radio"/> ✓ Only statement 1 is correct. <input type="radio"/> ✓ Both statements are correct <input checked="" type="radio"/> ✓ Both statements are false <input type="radio"/> ✓ Only statement 2 is correct. </p>	
	<p>Both are false. CFO rules test 2013. There is no reason to reset the playclock to 25 seconds: www.ruletool.info/3-2-4-c. There is also no reason to start the gameclock on the snap (team A first down and ball carrier out of bounds outside 2 minutes): www.ruletool.info/3-3-2-e</p>	

7	<p>Which statement(s) about the goal posts is/are true?</p> 		
	<p> <input checked="" type="radio"/> ✓ Each goal shall consist of two white or yellow uprights <input checked="" type="radio"/> ✗ The top of the horizontal crossbar is 14 feet above the ground <input type="radio"/> ✓ Each goal shall extend at least 24 feet above the ground </p> <p>Each goal shall consist of two white or yellow uprights extending at least 30 feet above the ground with a connecting white or yellow horizontal crossbar, the top of which is 10 feet above the ground. www.ruletool.info/1-2-5-a</p>		
74	<p>2013-2014 rules. With about five minutes remaining in the third quarter, a Team B player's helmet comes off during the play (no foul involved). Team B chooses to use a timeout. Please mark the correct statement related to the play and game clock:</p> 		
	<p> <input type="radio"/> ✓ Play clock is 40 seconds; the game clock starts on the snap <input type="radio"/> ✓ Play clock is 25 seconds; the game clock starts on the ready for play <input checked="" type="radio"/> ✗ Play clock is 40 seconds; the game clock starts on the ready for play <input type="radio"/> ✗ Play clock is 25 seconds; the game clock starts on the snap </p> <p>Play clock is 25 seconds; the game clock starts on the snap. 2013 CFO/NCAA National Rules Exam. www.ruletool.info/3-3-2-d, www.ruletool.info/3-2-4-c</p>		
44	<p>Third down at the A-3. After snapping the ball, snapper A58 touches B72 at the shoulders on his way to block a linebacker. While B72 and A58 are in contact, right guard A65 blocks B72 at his thigh from the front at the A-4 yardline. The result of the play is a 1st down at the A-25.</p>		
	<table border="0" style="width: 100%;"> <tr> <td style="width: 50%; vertical-align: top;"> <ul style="list-style-type: none"> • 1 • 25 • A </td> <td style="width: 50%; vertical-align: top;"> <ul style="list-style-type: none"> • 1 • 25 • a </td> </tr> </table> <p>A.R. 9-1-10-V. RULING: Legal. A54 is not blocking B62. The incidental contact does not constitute part of a combination block, and hence there is no chop block.</p>	<ul style="list-style-type: none"> • 1 • 25 • A 	<ul style="list-style-type: none"> • 1 • 25 • a
<ul style="list-style-type: none"> • 1 • 25 • A 	<ul style="list-style-type: none"> • 1 • 25 • a 		
85	<p>The game clock is running. With 20 seconds remaining on the play clock, the officials have not spotted the ball for the next down. Please indicate if the following procedure is correct: The referee shall signal an official's timeout, reset the play clock to 25 seconds and start both the game clock and the play clock on his signal.</p>		

- ✓ The procedure is not correct: the play clock should be reset to 40 seconds
- ✗ The procedure is correct
- ✓ The procedure is not correct: the referee should not have stopped the game clock and/or reset the play clock
- ✓ The procedure is not correct: the game clock should start on the snap

The procedure is correct: www.ruletool.info/3-2-4-b. CFO rules test 2013.

86

Fourth down and 2 to go at the B-28. On the last play of the first quarter, QB A3 is called for intentional grounding at the B-33. Please indicate if the following statement is correct: Following the penalty enforcement, the period will be extended with an untimed down.

- ✗ Yes, the statement is correct
- ✓ No, the quarter is over; Team B will start the next quarter with an untimed down
- ✗ No, the quarter is over; Team B will start the next quarter (with a timed down)

No, the quarter is over; Team B will start the next quarter (with a timed down). www.ruletool.info/3-2-3-a.

49

Which statement(s) is/are correct about pass plays? Statement 1: a receiver can gain firm, inbound possession of the ball and still not complete a catch. Statement 2: the receiver must have both feet inbounds while having possession and firm control of the ball, in order to complete a catch



- ✓ Only statement 1 is correct
- ✓ Only statement 2 is correct
- ✓ Both statements are correct
- ✓ Both statements are false

Only statement 1 is correct. Loss of ball simultaneous to returning to the ground is not a catch, interception or recovery: www.ruletool.info/2-4-3-e. Statement 2 is false: If one foot first lands inbounds and the receiver has possession and firm control of the ball, it is a catch or interception even though a subsequent step or fall takes the receiver out of bounds: www.ruletool.info/2-4-3-a

8

Which statement(s) about the goal is/are true?

- ✓ The crossbar and uprights shall be positioned 1 foot outside of the endline
- ✓ The goal is out of bounds
- ✓ The inside of the uprights and crossbar shall be in the same vertical plane as the inside edge of the end line
- ✓ The outside of the uprights and crossbar shall be parallel to the outside edge of the end line

The inside of the uprights and crossbar shall be in the same vertical plane as the inside edge of the end line. Each goal is out of bounds. www.ruletool.info/1-2-5-a

95 B3 player intercepts a forward pass at the B-4 yard line and his momentum carries him into the end zone where he is downed. During B's run in the end zone, a teammate clips an opponent in the end zone.

- ✓ Safety; 2 points for Team A
- ✓ Enforce the clipping penalty from the B-4. First and 10 team B.

The penalty results in safety: www.ruletool.info/10-2-2-c, www.ruletool.info/8-5-1-b. CFO rules test 2013

48 Are any or all of the following statements correct? Statement 1: It is by definition possible to catch a fumble Statement 2: It is by definition possible to catch a pass without any part of the player's body touching the ground inbounds



- ✗ Only statement 1 is true
- ✗ Both statements are true
- ✓ Both statements are false

Both are true: Statement 1) www.ruletool.info/2-2-1: A pass, kick or fumble that has not yet touched the ground is a live ball in flight. www.ruletool.info/2-4-3-a: "To catch a ball means that a player: 1. Gains possession (Rule 2-4-1) of a live ball in flight. Statement 2): To catch a ball means that a player: 2. Leaves his feet and firmly grasps a live ball in flight, the ball first touching the ground inbounds while still in his firm grasp." So if the ball touches the ground and the receiver does not, it is still a catch.

93 Team A's PAT kick is blocked behind the line of scrimmage by Team B. The kick continues to roll into the end zone where a Team A player recovers the kick prior to it going out of bounds.



Your test results

This test was finished on 12 January 2014 22:15

- The result of the play is a touchback
- 2 points for Team A
- No points for team A

No points for team A: the kick is dead when it touches the ground in the endzone: www.ruletool.info/6-3-9. No touchback: www.ruletool.info/8-3-6. Adapted version of CFO rules test 2013

46 Select the words below that are required for a team to have or gain 'legal possession' of the ball.

- The team gaining possession shall not have committed a foul prior to gaining possession
- Player/team possession of the ball
- Player/team eligibility to catch/recover the ball

A team is in legal possession if it has team possession when its players are eligible to catch or recover the ball. www.ruletool.info/2-4-1-c. It is not an issue if the team has committed a foul.

91 Down 1 with goal to go at the B-7 yardline. QB A6 receives the snap and runs toward the right sideline. Near the endzone, A6 jumps feet first toward the pylon on the goalline. He first touches the pylon and then the ground. At that moment, the ball is in his hand at the 1 yardline. A6 slides into the endzone with the ball breaking the plane of the goalline. He is untouched by team B. Time expired in the third quarter on this play. Next play?

- 2
- 1
- A

- 2
- 1
- A

Next down for team A at the 1 yardline. The QB is out of bounds when he touches the pylon: www.ruletool.info/4-2-1-b. No touchdown as the ball did not cross the goal line prior to the QB touching the pylon.

50 QB A4 throws a legal forward pass towards the sideline on his right side. Receiver A89 and corner back B44 are both in position to catch the ball. While the ball is in the air, A89 voluntarily steps out of bounds with one foot and remains out of bounds during the next action. Shortly, both players firmly grab the ball, after which B44 pulls the ball from the hands of A89. He secures the ball and runs to the team A endzone remaining inbounds for an apparent touchdown. Please select the correct statements.



Your test results

This test was finished on 12 January 2014 22:15

- ✓ A89 has committed a foul for illegal touching
- ✗ The pass is incomplete
- ✗ The ball is dead upon the simultaneous catch
- ✓ The pass is intercepted and declared dead immediately as A89 is out of bounds.
- ✓ Team A has possession on the spot of the catch
- ✓ The touchdown is good

To catch a ball means a player gains possession of a LIVE ball in flight: www.ruletool.info/2-4-3-a. The ball is OOB when it touches a player who is OOB: www.ruletool.info/4-2-3-a. The live ball becomes DEAD when it goes OOB: www.ruletool.info/4-1-3-a. The pass is incomplete if the ball is OOB by rule: www.ruletool.info/7-3-7-a. So the very instant that it touches A80 then the ball is OOB, the ball becomes dead, it cannot be caught and so is an incomplete pass.